

Guidelines for the Preparation of Full Papers

The full paper (Microsoft Word document, .doc) should be compressed in ZIP format and the .zip file should be sent via e-mail to the conference secretariat: eccm11@iceht.forth.gr

The following instructions will help you with the preparation of your full paper.

1. Full papers should be written in **Microsoft Word document (.doc)** format.
2. Papers should not exceed **10 (ten) pages** of **single-spaced text** inclusive of tables and figures.
3. Papers should be written in the **English** language.
4. **Page Setup:** The paper should be written on A4 paper format (portrait orientation). Both top and bottom page margins should be set to 2 cm. Both left and right page margins should be set to 2.5 cm. *(To modify the page setup in MS Word select from the menu: File > Page Setup)*
5. **Text formatting:** The paper should be written exclusively in Times New Roman typeface, single line paragraph spacing and single column format.
6. **Paper Head:** The paper title should be bold, centered, in point 14.

The author's name should be centered, in point 12 and separated by one blank line from the paper title.

The author's affiliation should be centered, in point 10 and separated by one blank line from the author's name.

The abstract should be justified in point 10 and separated by one blank line from the author's affiliation and by two blank lines from the paper body (first chapter title).

7. **Paper Body, Text:** The paper should be organized in numbered chapters. Each chapter should start with a title, written in capitals, point 12, bold and in left paragraph alignment. The "ACKNOWLEDGEMENTS" chapter title is not numbered. The References chapter is the last chapter of the paper. The "References" chapter title is not numbered and in title case (not in capitals). For example:

1. INTRODUCTION

2. RESULTS AND DISCUSSION

...

n. CONCLUSIONS

ACKNOWLEDGEMENTS

References

The text should be written using Times New Roman, point 12 and in justified paragraph alignment (single line spacing). Each chapter title should be separated by two blank lines from the leading (previous) text.

8. **References:** The numbered list of references to bibliography and published work should be the last chapter of the paper. References should be written in point 10 and numbered sequentially in order of citation in the text. The recommended format is as follows:

1. **Surname 1st Author, Initial 1st Author, Surname 2nd Author, Initial 2nd Author and Surname Last Author, Initial Last Author**, "Title", *Abbreviated Journal Name*, **Volume/Issue** (year of publication), page numbers.

A typical example is given below:

1. **Contant, C.M. and Logsdon, J.M.**, "The commercial development of space: is an international regulatory framework needed?", *Acta Astronaut.*, **54/8** (2004), 585-591.

For a list of journal name abbreviations please consult the following website:
<http://library.caltech.edu/reference/abbreviations/>

References should be cited in the text using square brackets: []. Examples:

- a) This result is in accordance with the work of Whoever [1].
- b) A more detailed description of this effect is provided in [2].

9. **Paper Body, Equations:** Equations should appear as close as possible to where they are first mentioned in the text. Equations should be aligned at the center of the page and separated by one blank line from both the leading and the following text. Equations should be numbered sequentially in "1,2,..." format. Equation numbers should appear to the right of the equation and aligned right (you can also use tab spacing to align the equation numbers). Equations should be referenced in the text using the abbreviation "Eq." followed by the equation number in parentheses. Example: "...as shown in Eq. (1)..."
10. **Paper Body, Figures:** Figures should appear as close as possible to where they are first mentioned in the text. Figures should be aligned at the center of the page and separated by two blank lines from the text. A figure caption (legend) should appear below the figure separated by one blank line from it. Figure captions should be aligned at the center of the page in point 10 and should start with the abbreviation "Fig." in bold followed by the figure number in bold. For example:

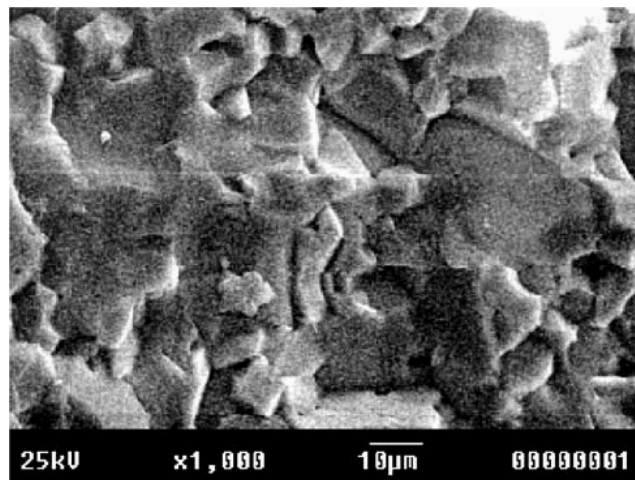


Fig. 1. SEM image of the matrix surface.

The Figure caption should be separated by two blank lines from the following text. Figures should be referenced in the text using the abbreviation "Fig." followed by the figure number. Example: "...as shown in Fig. 1...".

11. **Paper Body, Tables:** Tables should appear as close as possible to where they are first mentioned in the text. Tables should be aligned at the center of the page and separated by two blank lines from the leading and following text. A table caption should appear above the table separated by one blank line from it. Table captions should be aligned at the center of the page in point 10 and should start with the word "Table" in bold followed by the table number in bold. For example:

Table 1. Typical Properties of SiC-Nicalon fibres.

Property	Value
Filament diameter (μm)	12–14
Tensile strength (GPa)	3.0
Tensile modulus (GPa)	220
Failure strain (%)	1.4
Weibull modulus (25 mm g.l.)	3
Density (g/cm^3)	2.55
Coefficient of thermal expansion ($10^{-6}\text{ }^\circ\text{C}^{-1}$)	3.9 (25–500 $^\circ\text{C}$)
Specific heat ($\text{J}\cdot\text{g}^{-1}\cdot^\circ\text{C}^{-1}$)	0.71 (25 $^\circ\text{C}$) 1.17 (500 $^\circ\text{C}$)

12. **System of Units:** The SI system should be used for all scientific and laboratory data, although values in other systems may be quoted in parentheses after the SI units if authors consider it necessary. Temperatures should be given in Celsius ($^\circ\text{C}$) or Kelvin scales. The use of proprietary/empirical names should be avoided as far as possible, but may be acceptable where, in the Editor's opinion, the proprietary name is a universally known description of the material in question, eg Kevlar-49.
13. **Remark:** Papers of advertising nature will not be accepted.